

m o o o i[®]



ZLIQ Sofa

ZLIQ Sofa by Marcel Wanders

Designer

Marcel Wanders

Year of design

2012

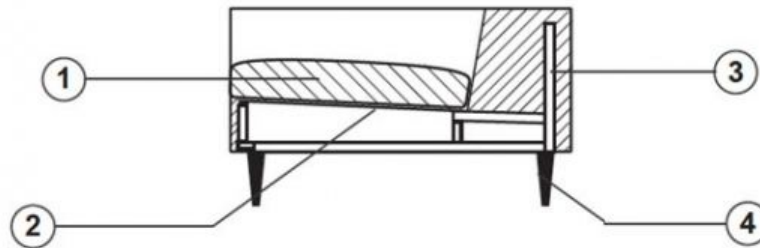
Material

steel, foam and dacron

technical

The Zliq sofa is constructed from a steel box frame covered in foam and dacron, the seat cushions made in foam and removable.

Zliq sofa is produced with removable covers except for the categories Faux, Arredo leather or Cervino leather. Back pillows are separately available.



1. Multiple density fire retardant foam composition + dacron
2. Elastic straps fixed on the wood base
3. Steel box frame covered
4. Chromed cast aluminium legs

upholstery categories

Macchedil Sottile
Macchedil Grezzo
Manga
Oray
Faux*
Softlinen
Bouclé

Jacquard Andaz
Jacquard Fresco
Jacquard Old Blue
Velour
Arredo Leather*
Cervino Leather*

*not removable

Macchedil, Sottile

composition

49% vi, 24% pl, 21% li, 6% co

abrasion

30.000 martindale

lightfastness 4

firetest

FR BS5852 0/1

EN1021 I&2



Macchedil Sottile
Black indigo



Macchedil Sottile
Pinkish



Macchedil Sottile
Off white



Macchedil Sottile
Light grey



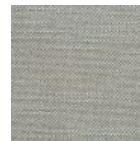
Macchedil Sottile
Light brown



Macchedil Sottile
Grey grey



Macchedil Sottile
Anthracite



Macchedil Sottile
Blue grey



Macchedil Sottile
Cappucino



Macchedil Sottile
Deep blue

Macchedil, Grezzo

composition

47% co, 20% vi, 18% pi, 8% li, 5% pc, 2% af

abrasion

18.000 martindale

lightfastness 4

firetest

FR BS5852 0/1
EN1021 I&2



Manga

composition

29% pl, 71% co

abrasion

40.000 martindale

lightfastness 5

firetest

FR BS5852 0/1
EN1021 I&2



Oray

composition

8% co, 38% vi, 15% pl, 39% li

abrasion

25.000 martindale

lightfastness 4

firetest

FR BS5852 0/1

EN1021 I&2



Oray
Cream



Oray
Sand



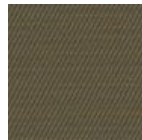
Oray
Rock



Oray
Mineral



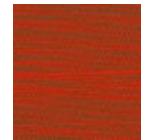
Oray
Gravel



Oray
Dark Gull



Oray
Copper



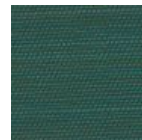
Oray
Rust



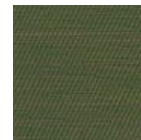
Oray
Flamboyant



Oray
Oil



Oray
Aqua



Oray
Peyote



Oray
Ocean



Oray
Metal



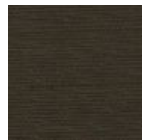
Oray
Griffin



Oray
Dusk



Oray
Chestnut



Oray
Dark



Oray
Indigo



Oray
Ochre

Faux

composition

100% pl

abrasion

50.000 martindale

lightfastness 4

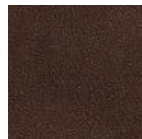
firetest

FR BS5852 0/1

EN1021 I&2



Faux
Black



Faux
Brown

Softlinen

composition

100% Linen

abrasion

25.000 martindale

lightfastness 6

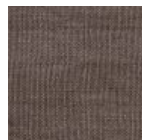
firetest

FR BS5852 0/1

EN1021 I&2



Softlinen
Beige



Softlinen
Brown

Bouclé

composition

43% co, 28% pan, 14% pa, 12% vi, 3% pl

abrasion

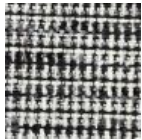
20.000> martindale

lightfastness 4

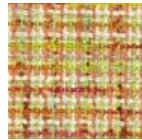
firetest

FR BS5852 0/1

EN1021 I&2



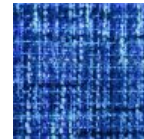
Bouclé
Black white



Bouclé
Rainbow



Bouclé
Brown



Bouclé
Blue

Jacquard andaz

composition:

34% cotton - 30% viscose - 24% linen - 12% polyamide

abrasion:

25000 martindale

firetest:

BS 5852 : Part 1 : 1979

BS EN 1021 I&2



Jacquard
Andaz

Jaquard Fresco

composition

40% vi ,36% co,14% pl, 10% li

abrasion

20.000> martindale

firetest

FR BS5852 0/1

EN1021 I&2



Jaquard
Fresco

Jacquard Old Black & Blue

composition

52% vi, 38% co, 10% li

abrasion

20.000> martindale

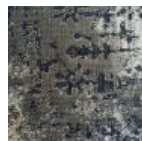
firetest

FR BS5852 0/1

EN1021 I&2



Jaquard
Old Blue



Jaquard
Old Black

Velour

composition

77% wo, 8% pa, 15% pl

abrasion

100.000 martindale

lightfastness 7

firetest

FR BS5852 0/1

EN1021 I&2



Velour
Coral



Velour
Stone



Velour
Moss

Arredo Leather

composition

100% semi aniline leather

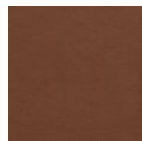
firetest

FR BS5852 0/1

EN1021 I&2



Arredo Leather
Black



Arredo Leather
Brown



Arredo Leather
White

Cervino Leather

composition

100% aniline leather

firetest

FR BS5852 0/1

EN1021 I&2



Cervino Leather
Anthracite



Cervino Leather
Cognac



Cervino Leather
Mud



Cervino Leather
Pure

pillows

Pillows is available seperately.

CMHR foam, always upholstered in white or one of in the available fabrics.

packaging

Zliq Sofa:

H 107 cm | 42"
W 279 cm | 110"
D 84 cm | 33"

Colli I

With packaging:
97,5 KG | 215 lb

Zliq 2-seater element:

H 74 cm | 29"
W 176 cm | 69.3"
D 64 cm | 25.2"

Colli I

With packaging:
48 KG | 106 lb

Zliq 1-seater element:

H 74 cm | 29.1"
W 106 cm | 41.7"
D 64 cm | 25.2"

Colli I

With packaging:
34 KG | 75 lb

dimensions

