

m o o o i[®]



Cocktail Chair

Mix the lightness of your favourite cocktail with the weight of Dutch historical heritage, while comfortably lounging in Marcel Wanders' Cocktail chair.

Designer

Marcel Wanders

Year of design

2013

Material

Moulded foam on steel frame with oak legs

upholstery categories

Heritage

Macchedil Sottile

Macchedil Grezzo

Oray

Faux

Bouclé

Jacquard Andaz

Jacquard Fresco

Jacquard Old Blue

Twill

Ummit Uni

Velour

COF

Heritage



Macchedil, Sottile

composition

49% vi, 24% pl, 21% li, 6% co

abrasion

30.000 martindale

lightfastness 4

firetest

FR BS5852 0/1

EN1021 I&2



Macchedil Sottile
Black indigo



Macchedil Sottile
Pinkish



Macchedil Sottile
Off white



Macchedil Sottile
Light grey



Macchedil Sottile
Light brown



Macchedil Sottile
Grey grey



Macchedil Sottile
Anthracite



Macchedil Sottile
Blue grey



Macchedil Sottile
Cappucino



Macchedil Sottile
Deep blue

Macchedil, Grezzo

composition

47% co, 20% vi, 18% pi, 8% li, 5% pc, 2% af

abrasion

18.000 martindale

lightfastness 4

firetest

FR BS5852 0/1

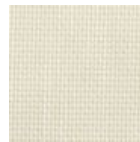
EN1021 1&2



Macchedil Grezzo
Black indigo



Macchedil Grezzo
Pinkish



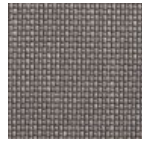
Macchedil Grezzo
Offwhite



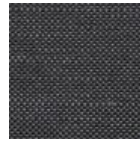
Macchedil Grezzo
Light grey



Macchedil Grezzo
Light brown



Macchedil Grezzo
Grey grey



Macchedil Grezzo
Anthracite



Macchedil Grezzo
Blue grey



Macchedil Grezzo
Cappuchino



Macchedil Grezzo
Deepblue

Oray

composition

8% co, 38% vi, 15% pl, 39% li

abrasion

25.000 martindale

lightfastness 4

firetest

FR BS5852 0/1

EN1021 I&2



Oray
Cream



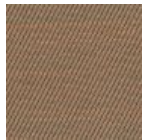
Oray
Sand



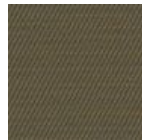
Oray
Rock



Oray
Mineral



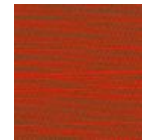
Oray
Gravel



Oray
Dark Gull



Oray
Copper



Oray
Rust



Oray
Flamboyant



Oray
Oil



Oray
Aqua



Oray
Peyote



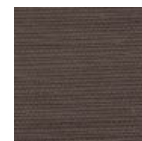
Oray
Ocean



Oray
Metal



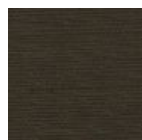
Oray
Griffin



Oray
Dusk



Oray
Chestnut



Oray
Dark



Oray
Indigo



Oray
Ochre

Faux

composition

100% pl

abrasion

50.000 martindale

lightfastness 4

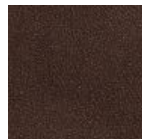
firetest

FR BS5852 0/1

EN1021 I&2



Faux
Black



Faux
Brown

Bouclé

composition

43% co, 28% pan, 14% pa, 12% vi, 3% pl

abrasion

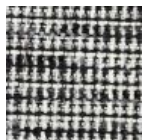
20.000> martindale

lightfastness 4

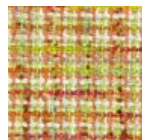
firetest

FR BS5852 0/1

EN1021 I&2



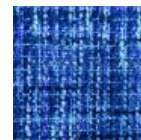
Bouclé
Black white



Bouclé
Rainbow



Bouclé
Brown



Bouclé
Blue

Jacquard andaz

composition:

34% cotton - 30% viscose - 24% linen - 12% polyamide

abrasion:

25000 martindale

firetest:

BS 5852 : Part 1 : 1979

BS EN 1021 1&2



Jacquard
Andaz

Jacquard Old Black & Blue

composition

52% vi, 38% co, 10% li

abrasion

20.000> martindale

firetest

FR BS5852 0/1

EN1021 1&2



Jacquard
Old Blue



Jacquard
Old Black

Jaquard Fresco

composition

40% vi ,36% co,14% pl, 10% li

abrasion

20.000> martindale

firetest

FR BS5852 0/1
EN1021 I&2



Jaquard
Fresco

Twill

composition

72% wo, 8% pa, 20% pl

abrasion

75.000 martindale

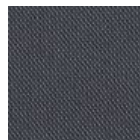
lightfastness 5

firetest

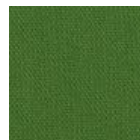
FR BS5852 0/1
EN1021 I&2



Twill
Caviar



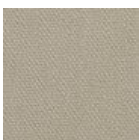
Twill
Graphite



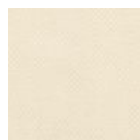
Twill
Grass



Twill
Light grey



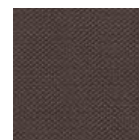
Twill
Linen



Twill
Natural



Twill
Passion



Twill
Walnut

Summit UNI

composition

22% wo, 2% pa, 14% pl, 62% pl filling

abrasion

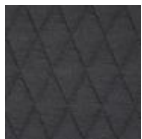
50.000 martindale

lightfastness 5

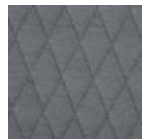
firetest

FR BS5852 0/1

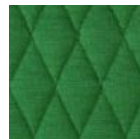
EN1021 I&2



Summit UNI
Caviar



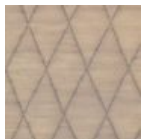
Summit UNI
Graphite



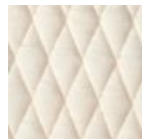
Summit UNI
Grass



Summit UNI
Grey



Summit UNI
Linen



Summit UNI
Natural



Summit UNI
Passion



Summit UNI
Walnut

Velour

composition

77% wo, 8% pa, 15% pl

abrasion

100.000 martindale

lightfastness 7

firetest

FR BS5852 0/1

EN1021 I&2



Velour
Coral

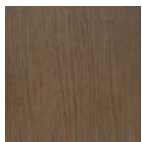


Velour
Stone

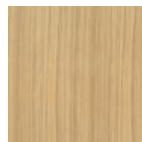


Velour
Moss

colours



Wood Stained
Cinnamon



Wood Stained
White Washed

cleaning instructions

Moooi recommends using a good furniture polish and a soft cloth. Apply generously in layers to the surface and use the cloth to shine. Do not use abrasive fabrics, gently remove tough stains with warm water and a trusted multi-surface cleaner.

packaging

H 75,5 cm | 0"

W 75,5 cm | 29,7"

D 73 cm | 28,7"

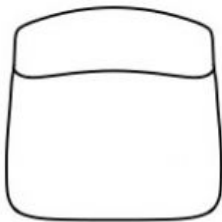
Colli 1/1

With packaging:

15 KG | 33,1 lb

dimensions

74cm | 29,1"



69cm | 27,2"



73cm | 28,7"

38cm | 15"



48cm | 18,9"